

# RESISTANT SUPPORT

SCOTLAND & NORTH ENGLAND  
SCOTT FLEMING  
+44 (0) 77 0271 5265  
scott@resistant.co.uk

CENTRAL ENGLAND  
KARLA NICHOLLS  
+44 (0) 78 7917 1948  
karla@resistant.co.uk

SOUTH ENGLAND  
KEITH WILLOUGHBY  
+44 (0) 79 7713 7365  
keith@resistant.co.uk

SOUTHERN IRELAND  
DECLAN DONNELLY  
+353 (0) 87 932 6632  
tradewoodandco@gmail.com

NORTHERN IRELAND SALES & HEAD OFFICE  
Laura Peel  
+44 (0) 28 9074 9400  
sales@resistant.co.uk

## DISTRIBUTOR INFORMATION

## HANDLING & STORAGE

Resistant boards should be stored flat, raised from the ground on a pallet. They should be stored in dry conditions indoors and be under cover.

Boards should not be leant upright for long periods of time, and should never be dragged across each other to prevent unnecessary scratching or damage.

They should always be lifted by two people and carried on edge rather than flat. Extra caution should be taken to protect corners and edges of the boards. Any moisture allowed to infiltrate between the sheets may cause permanent surface staining.

## HEALTH & SAFETY

Resistant boards are classified as non-deleterious product and contain less than 0.5% crystalline silica. They are a 'Class 0' material according to National Building Regulations which deems them 'low risk'.

All the requirements of the Health & Safety at work act should be met, as well as any general or specific regulations applying to the area where the boards are being installed. The use of personal protective equipment is advised at all times when working with the boards.

## PROVIDING SOLUTIONS ACROSS THE BOARD.

### Resistant Building Products Limited

7 Duncrue Place  
Belfast  
BT3 9BU

**Tel:** +44 (0)28 9074 9400  
**Fax:** +44 (0)28 9074 9420

**E-Mail:** sales@resistant.co.uk  
**Web:** www.resistant.co.uk



Guidance on use & installation  
of solid-fuel stove surrounds &  
register plates.



✓ High Strength

✓ Fire Resistant

✓ A1 Non-Combustible

✓ Easy Fix

## INTRODUCTION

In the UK, installation of new stoves and heating appliances are subject to the requirements of the local building regulations and by law, are notifiable to your local authority building control department. HETAS registered installers are trained and approved to UKAS standards and can self certify that work carried out complies with the relevant building regulations. Resistant Building Products aims to provide safe and efficient products and services which meet the criteria requested by current regulations.

### IMPORTANT



*Non-combustible passive fire protection boards restrict, but do not fully stop, heat transference. It is important to include a layer of suitable insulation for further protection of services and fixtures behind the board.*

## PRODUCT DESCRIPTION

Resistant Building Products supply A1 rated non-combustible fire resistant boards which cover a wide range of applications. Any 12mm board from the Resistant range would be suitable for use as a solid-fuel stove surround or register plate.

The boards are designed to withstand a maximum continuous operating temperature of 150°C, which compares favourably to plasterboard, which is around 49°C. Resistant's range are high quality magnesium oxide boards designed with multiple layers of glass fibre reinforced mesh which provide optimum strength qualities.

Resistant boards adhere to the requirements of Building Regulations Part J (Combustion Appliances and Fuel Storage Systems), providing a non-combustible solution for the installation.

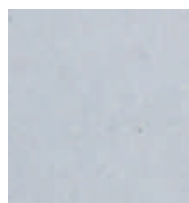


## FIXING

Boards should be mechanically fixed back to either masonry or steel stud walls at maximum 300mm fixing centres with stainless steel screws. They should never be fixed back to timber battens for this application. High density mineral fibre insulation should be correctly fitted behind Resistant boards in a manner to protect the wall structure, services within the wall and any wall linings on the opposite side, from the effects of heat transfer. Ensure the hole for the flue pipe is 10mm larger than the flue circumference. It is recommended that a flue sealing plate (above) is screw fixed back to the board for maximum protection & best finish.

## FINISHING

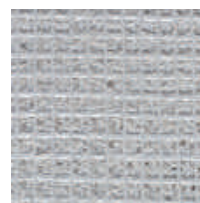
Either side of our boards may be used, depending on the type of topcoat to be applied and finish desired. Our guidance is that the smooth side is best for painting, while plasters may be best applied to the slightly rougher face. Some of our boards in the range also provide a heavily keyed surface which is ideal for receiving thick topcoats. Advice should be received from the plaster, paint or render manufacturer with regards to the performance of the chosen finish at elevated temperatures. Resistant suggest that the application of an acrylic primer and a heat resistant topcoat will give the best finish and increase fire resistance.



SMOOTH SURFACE



ROUGHER SURFACE



KEYED SURFACE

## STOVE FITTING

*Ensure all new stoves are fitted following the manufacturers instruction, taking special care to leave at least the minimum amount of room around the stove to allow for heat transfer. The stove should NEVER be fitted hard up against the boards. Always check with the manufacturer what maximum temperature is expected to radiate out from the side and the back of the stove.*

## GENERAL TECHNICAL DATA

The following table provides performance data for Resistant boards. This information has been collected via means of accredited testing and all test reports are available upon request. Further information can be found at [www.resistant.co.uk](http://www.resistant.co.uk).

Properties	MULTI-PRO XS	MULTI-REND	MULTI-PRO
Colour	Off-White	Off-White	Off-White
Density (ex works) (kg/m <sup>3</sup> )	1050 <sup>(+/-10%)</sup>	1050 <sup>(+/-10%)</sup>	1050 <sup>(+/-10%)</sup>
Thermal Conductivity (W/mK)	0.307	0.307	0.307
Fire Rating	A1 Euroclass	A1 Euroclass	A1 Euroclass
Fire resistance steel/timber	Up to 120 min	-	Up to 60 min
Racking Resistance	Passed	-	-
Tensile Strength Perpendicular Plane (N/mm <sup>2</sup> )	2.315	2.004	-
Modulus of Rupture (N/mm <sup>2</sup> )	Longitudinal	17.7	17.7
	Transverse	12.4	12.4
Modulus of Elasticity (N/mm <sup>2</sup> )	6503	6415	-
Impact Strength (N/mm <sup>2</sup> )	34	34	34
Durability	Category B	Category B	Category B

## RECOMMENDED SHEET SIZES

For this particular application, the following sheet sizes are recommended by Resistant Building Products. Further sheet sizes are available for alternative applications.

Product	Thickness (mm)	Sheet Dimensions (mm)	Weight per Board (kg)
MULTI-PRO XS	12	2400 x 1200	36
MULTI-REND	12	2400 x 1200	36
MULTI-PRO	12	2400 x 1200	36