

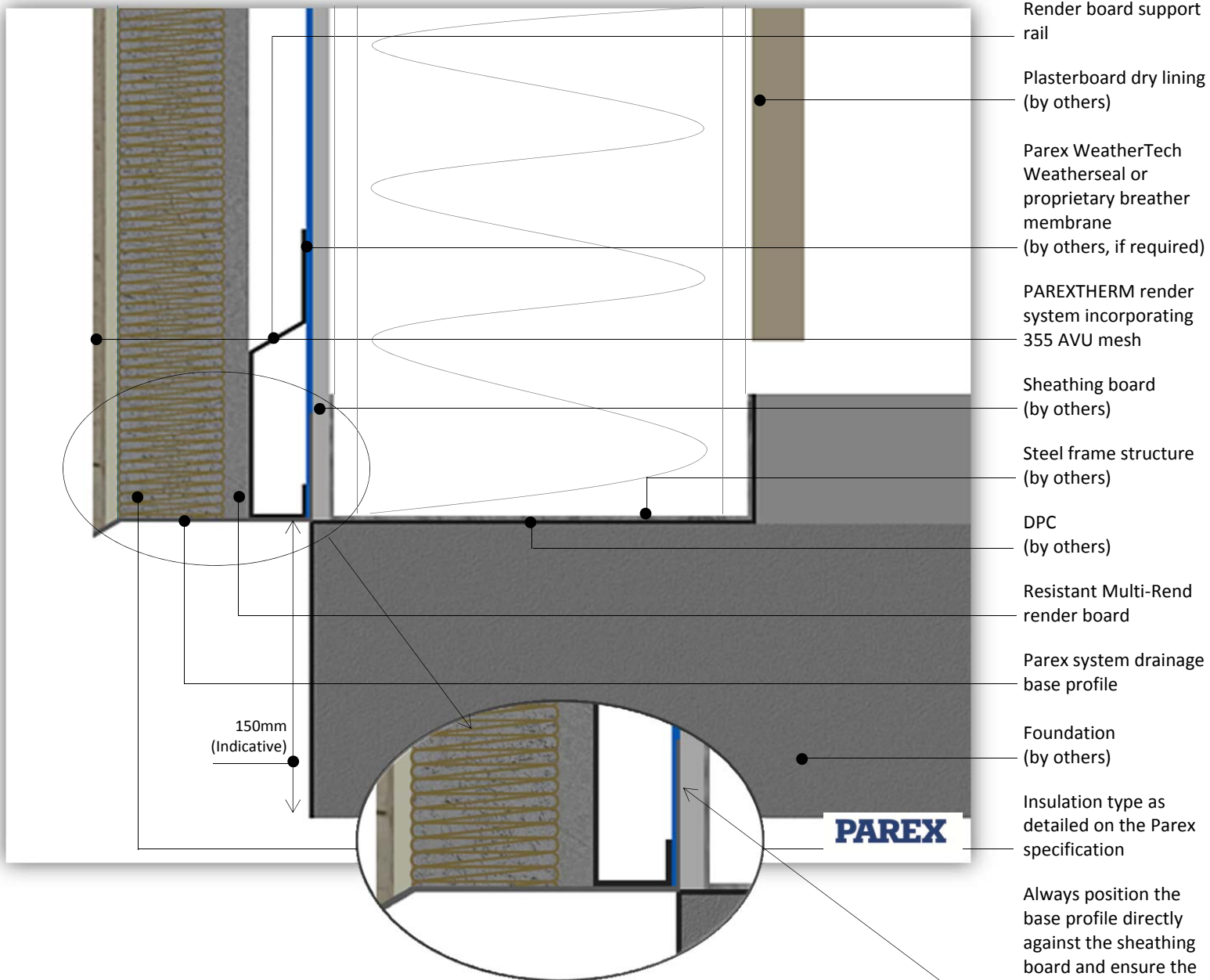
# PAREX THERM CAVITY ON TO STEEL FRAME

# PTCS0111B

TYPICAL BASE DETAIL



This detail is for general guidance only and is not project specific. Always refer to the project architect details and the PAREX project specific specification.



- Render board support rail
  - Plasterboard dry lining (by others)
  - Parex WeatherTech Weatherseal or proprietary breather membrane (by others, if required)
  - PAREX THERM render system incorporating 355 AVU mesh
  - Sheathing board (by others)
  - Steel frame structure (by others)
  - DPC (by others)
  - Resistant Multi-Rend render board
  - Parex system drainage base profile
  - Foundation (by others)
  - Insulation type as detailed on the Parex specification
- Always position the base profile directly against the sheathing board and ensure the WeatherTech seals over the vertical section of the profile.

System: PAREX THERM onto Steel Frame  
 Application: PAREX THERM system onto Resistant Multi-Rend render board – Typical base detail  
 Drawing No: PTCS0111B  
 Date: June 2016



The information provided in this document results from our knowledge of the products and our experience. On-site results may vary, in particular according to the product application methods adopted. Where application methods not covered by this document are used, customers must request specific additional information and/or carry out a representative test before using the products. The above-mentioned information in no way constitutes a warranty relative to the use of the products. Our general terms and conditions of sale shall prevail, in any event, on the information provided in this document. Prior to application, customers and users are requested to check that they have the latest version of this document.