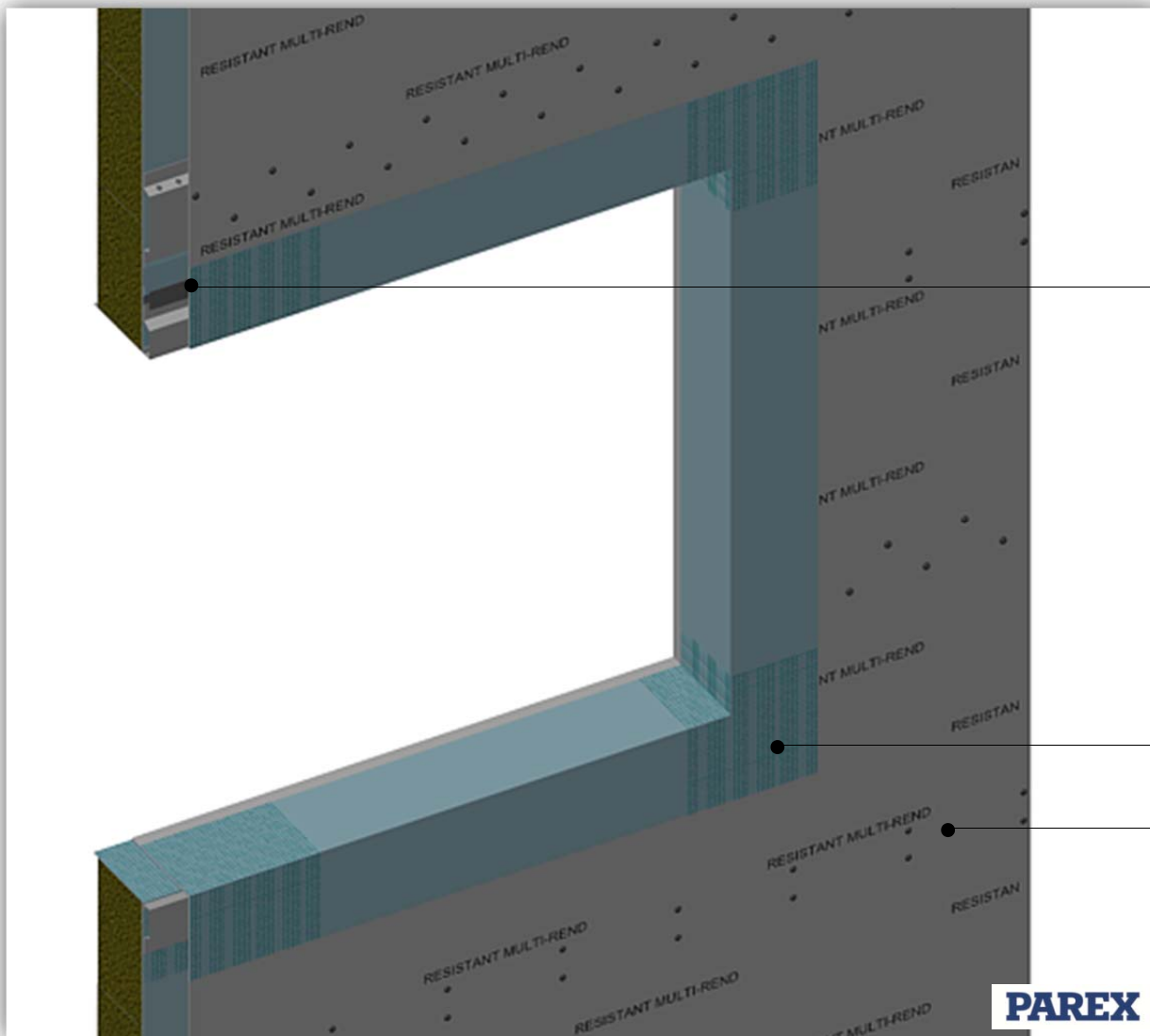




This detail is for general guidance only and is not project specific. Always refer to the project architect details and the PAREX project specific specification.



Fasten the render boards to the manufacturers requirements.

Apply a mastic or silicone sealant bead to the face of the window / door head cavity deflection channel to ensure a good seal is created before securing the board.

Seal the board joint to the reveals with the Parex WeatherTech Weatherseal taken into the opening in one continuous application. Where there are large voids embed with 352 SA mesh to provide additional strength.

Resistant Multi-Rend render board

The general principles of this detail will apply to all forms of openings. For unusual applications contact Parex for additional guidance.

System: PAREX THERM onto Steel Frame
Application: Window installation 3 of 5 - Sealing of the render board into the opening
Drawing No: PTCS0109A (In addition to this detail please also refer to details – PTCS0109 1 to 5)
Date: November 2015

