

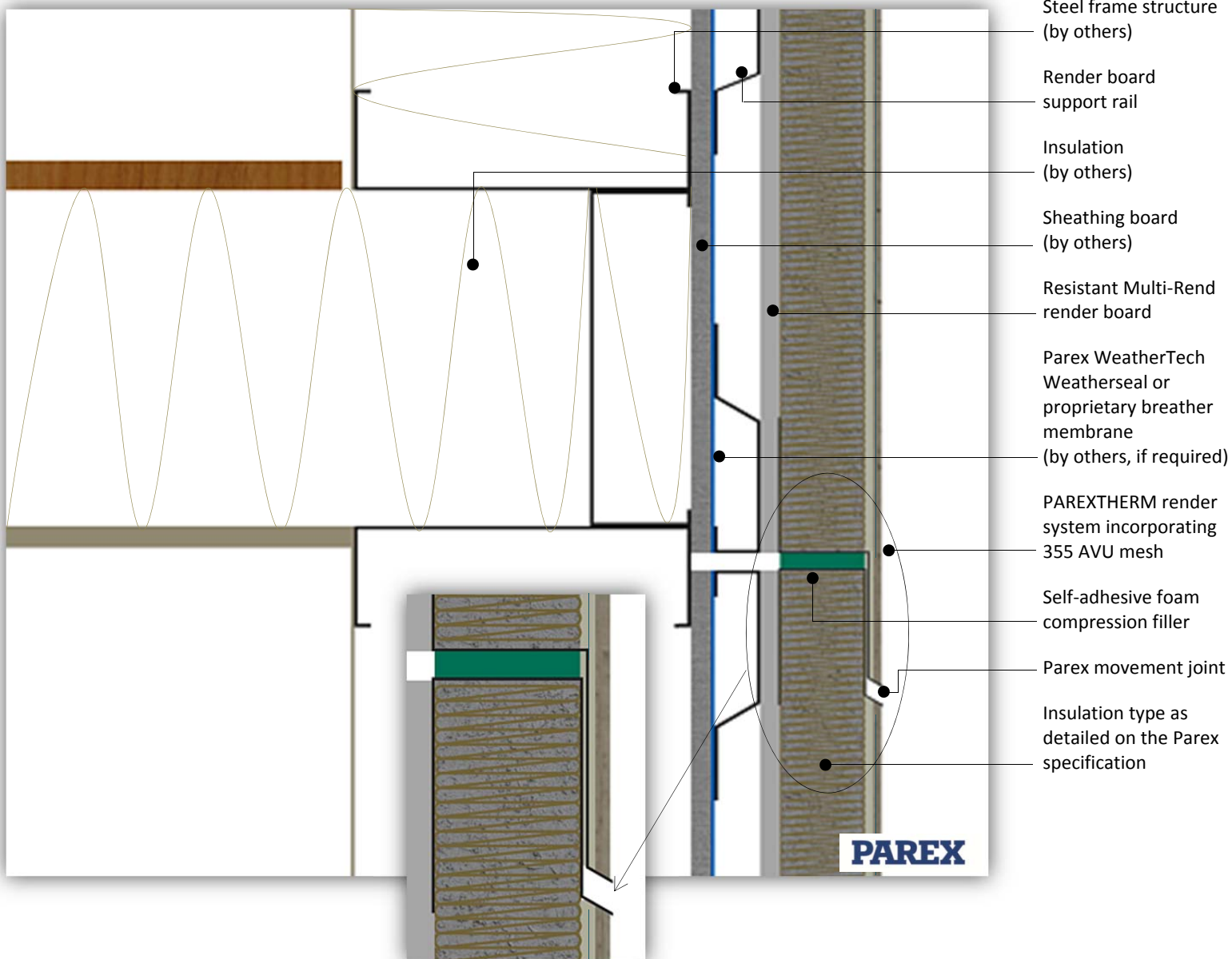
# PAREX THERM CAVITY ON TO STEEL FRAME FRAME

HORIZONTAL MOVEMENT

# PTCS0103B



This detail is for general guidance only and is not project specific. Always refer to the project architect details and the PAREX project specific specification.



Steel frame structure (by others)

Render board support rail

Insulation (by others)

Sheathing board (by others)

Resistant Multi-Rend render board

Parex WeatherTech Weatherseal or proprietary breather membrane (by others, if required)

PAREX THERM render system incorporating 355 AVU mesh

Self-adhesive foam compression filler

Parex movement joint

Insulation type as detailed on the Parex specification

System: PAREX THERM onto Steel Frame

Application: PAREX THERM system onto Resistant Multi-Rend render board – Horizontal Movement

Drawing No: PTCS0103B (In addition to this detail please also refer to detail – PTCS0103A)

Date: July 2016

## PAREX

The information provided in this document results from our knowledge of the products and our experience. On-site results may vary, in particular according to the product application methods adopted. Where application methods not covered by this document are used, customers must request specific additional information and/or carry out a representative test before using the products. The above-mentioned information in no way constitutes a warranty relative to the use of the products. Our general terms and conditions of sale shall prevail, in any event, on the information provided in this document. Prior to application, customers and users are requested to check that they have the latest version of this document.