

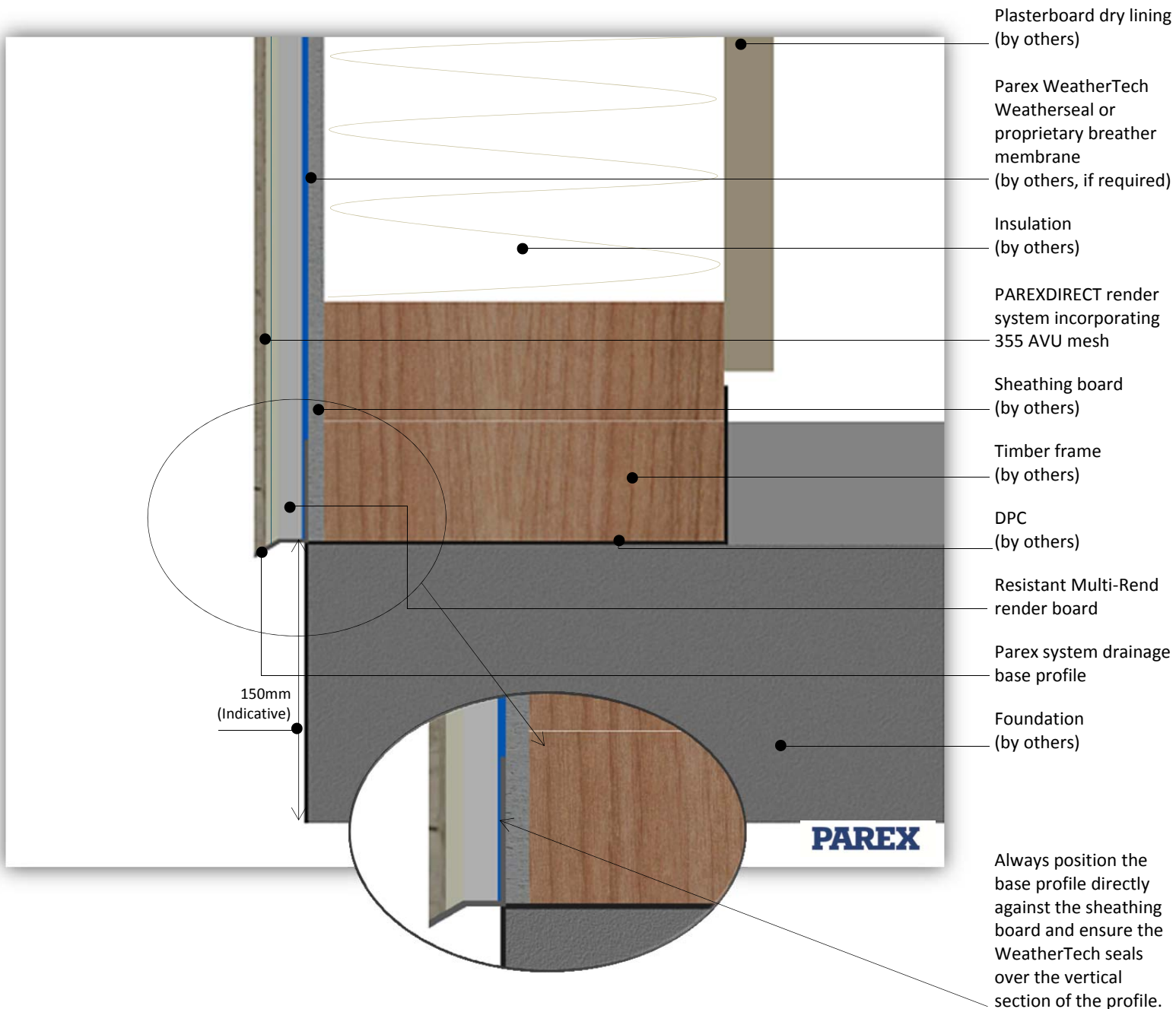
PAREXDIRECT ONTO TIMBER FRAME

TYPICAL BASE DETAIL



PDTNC0811B

This detail is for general guidance only and is not project specific. Always refer to the project architect details and the PAREX project specific specification.



System: PAREXDIRECT onto Timber Frame

Application: PAREXDIRECT system onto Resistant Multi-Rend render board – Typical base detail

Drawing No: PDTNC0811B

Date: June 2016



The information provided in this document results from our knowledge of the products and our experience. On-site results may vary, in particular according to the product application methods adopted. Where application methods not covered by this document are used, customers must request specific additional information and/or carry out a representative test before using the products. The above-mentioned information in no way constitutes a warranty relative to the use of the products. Our general terms and conditions of sale shall prevail, in any event, on the information provided in this document. Prior to application, customers and users are requested to check that they have the latest version of this document.