

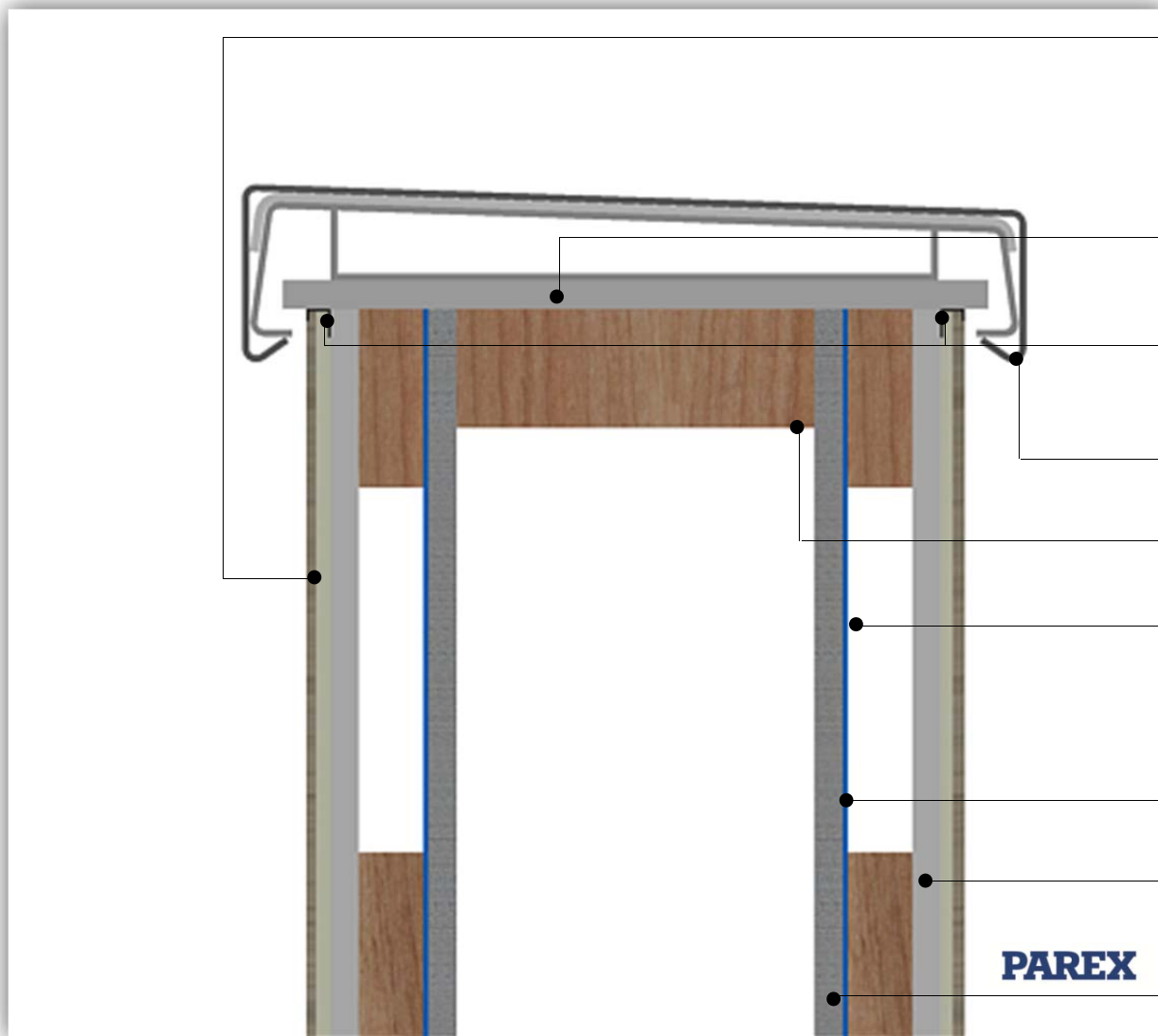
PAREXDIRECT CAVITY ONTO TIMBER FRAME

PDCS0418B

COPING DETAIL



This detail is for general guidance only and is not project specific. Always refer to the project architect details and the PAREX project specific specification.



PAREXDIRECT render system incorporating 355 AVU mesh

External grade sheathing board with mechanical fixing capabilities to receive the coping system (by others)

PVC stop bead or full system stop bead as per project requirement

Aluminium powder coated coping system (by others)

Timber frame structure (by others)

Treated cavity batten (by others)

Parex WeatherTech Weatherseal or proprietary breath membrane (by others, if required)

Resistant Multi-Rend render board

Racking board If required (by others)

PAREX

System: PAREXDIRECT onto Steel Frame

Application: PAREXDIRECT system onto Resistant Multi-Rend render board – Coping detail

Drawing No: PDTC0418B (In addition to this detail please also refer to detail – PDTC0418A)

Date: July 2016

PAREX

The information provided in this document results from our knowledge of the products and our experience. On-site results may vary, in particular according to the product application methods adopted. Where application methods not covered by this document are used, customers must request specific additional information and/or carry out a representative test before using the products. The above-mentioned information in no way constitutes a warranty relative to the use of the products. Our general terms and conditions of sale shall prevail, in any event, on the information provided in this document. Prior to application, customers and users are requested to check that they have the latest version of this document.