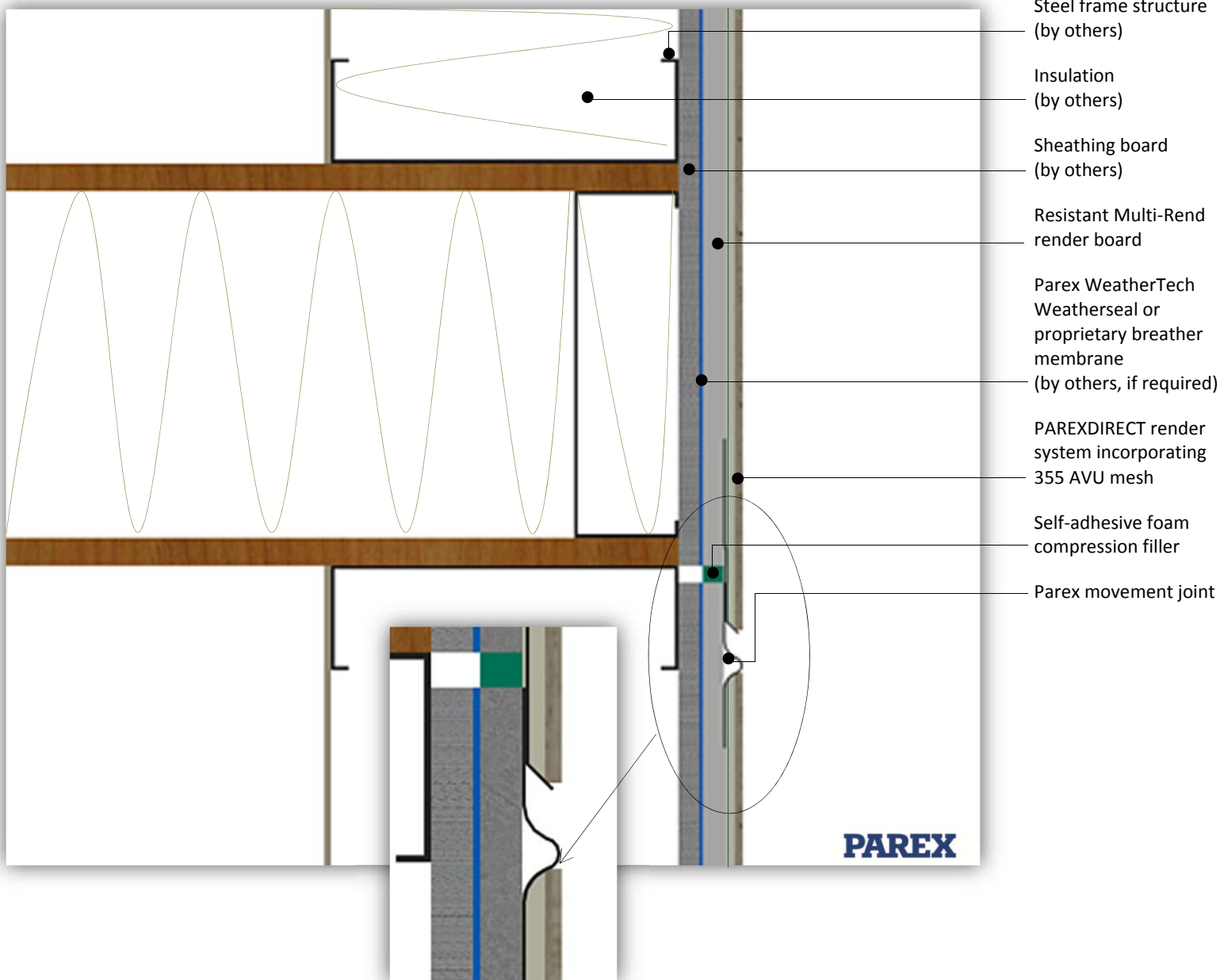




This detail is for general guidance only and is not project specific. Always refer to the project architect details and the PAREX project specific specification.



System: PAREXDIRECT onto Steel Frame

Application: PAREXDIRECT system onto Resistant Multi-Rend render board – Horizontal Movement

Drawing No: PDSNC0603B (In addition to this detail please also refer to detail – PDSNC0603A)

Date: November 2015