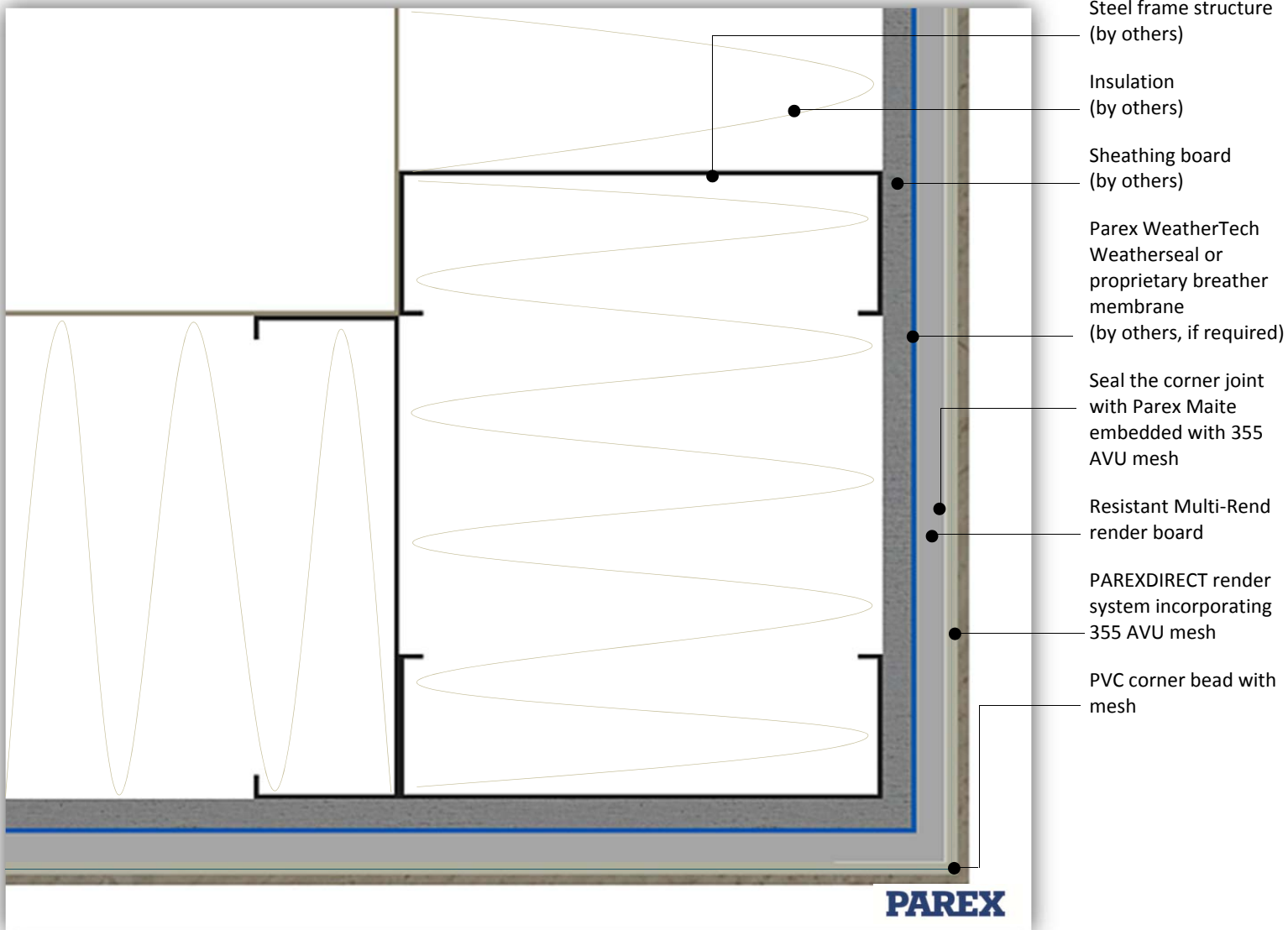




This detail is for general guidance only and is not project specific. Always refer to the project architect details and the PAREX project specific specification.



System: PAREXDIRECT onto Steel Frame

Application: PAREXDIRECT system onto Resistant Multi-Rend render board – External Corner

Drawing No: PDSNC0602B (In addition to this detail please also refer to detail – PDSNC0602A)

Date: November 2015