

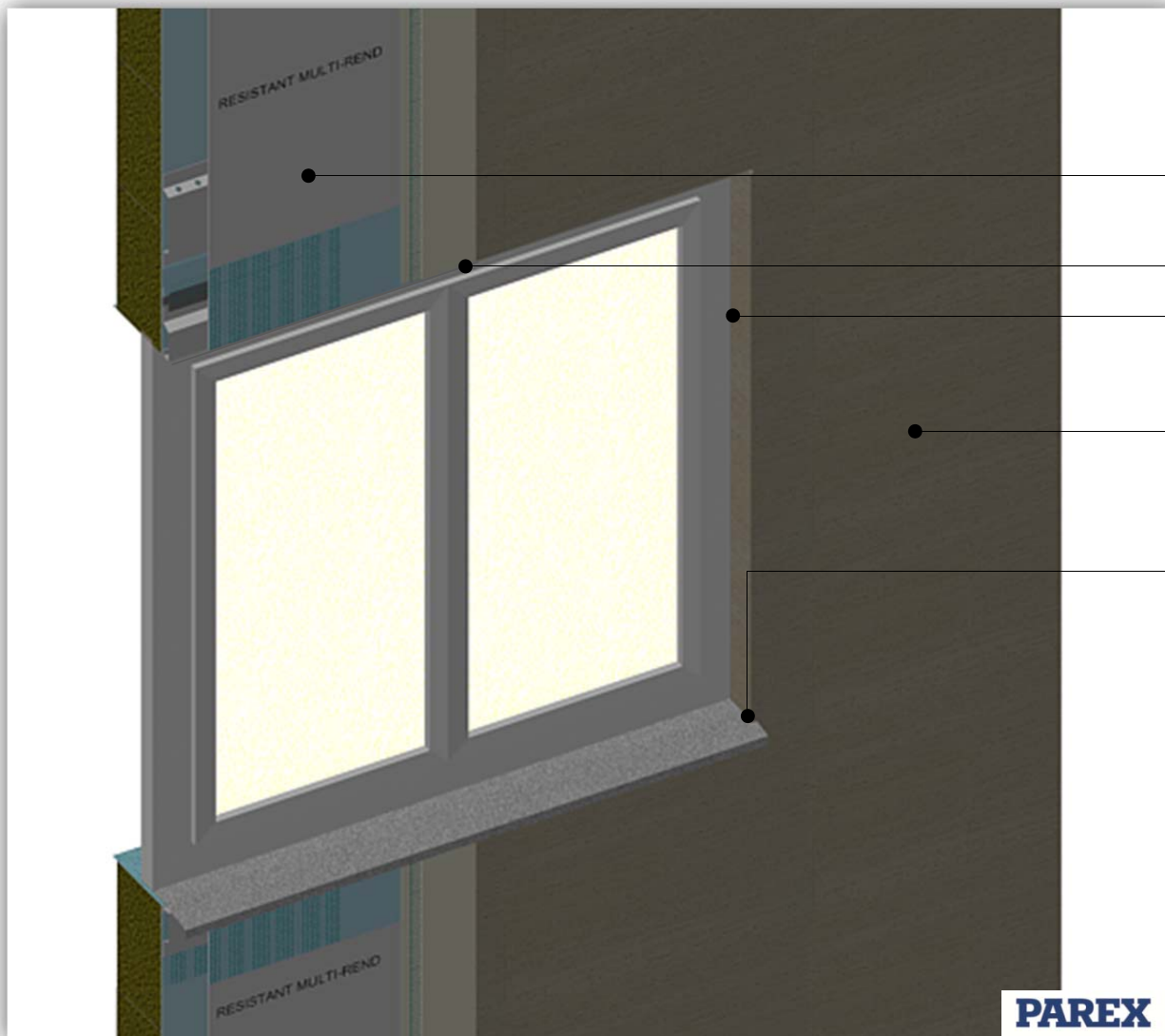
# PAREXDIRECT CAVITY ONTO STEEL FRAME

# PDCS0209A

WINDOW PROCEDURE 5 OF 5



This detail is for general guidance only and is not project specific. Always refer to the project architect details and the PAREX project specific specification.



Resistant Multi-Rend render board

PVC corner bead with mesh

PVC stop bead

PAREXDIRECT render system incorporating 355 AVU mesh

Fully seal the render to the window with an appropriate mastic or silicone sealant

The general principles of this detail will apply to all forms of openings. For unusual applications contact Parex for additional guidance.

System: PAREXDIRECT onto Steel Frame

Application: Window installation 5 of 5 - Render application

Drawing No: PDCS0209A (In addition to this detail please also refer to details – PDCS0209 1 to 5)

Date: November 2015

**PAREX**

The information provided in this document results from our knowledge of the products and our experience. On-site results may vary, in particular according to the product application methods adopted. Where application methods not covered by this document are used, customers must request specific additional information and/or carry out a representative test before using the products. The above-mentioned information in no way constitutes a warranty relative to the use of the products. Our general terms and conditions of sale shall prevail, in any event, on the information provided in this document. Prior to application, customers and users are requested to check that they have the latest version of this document.