

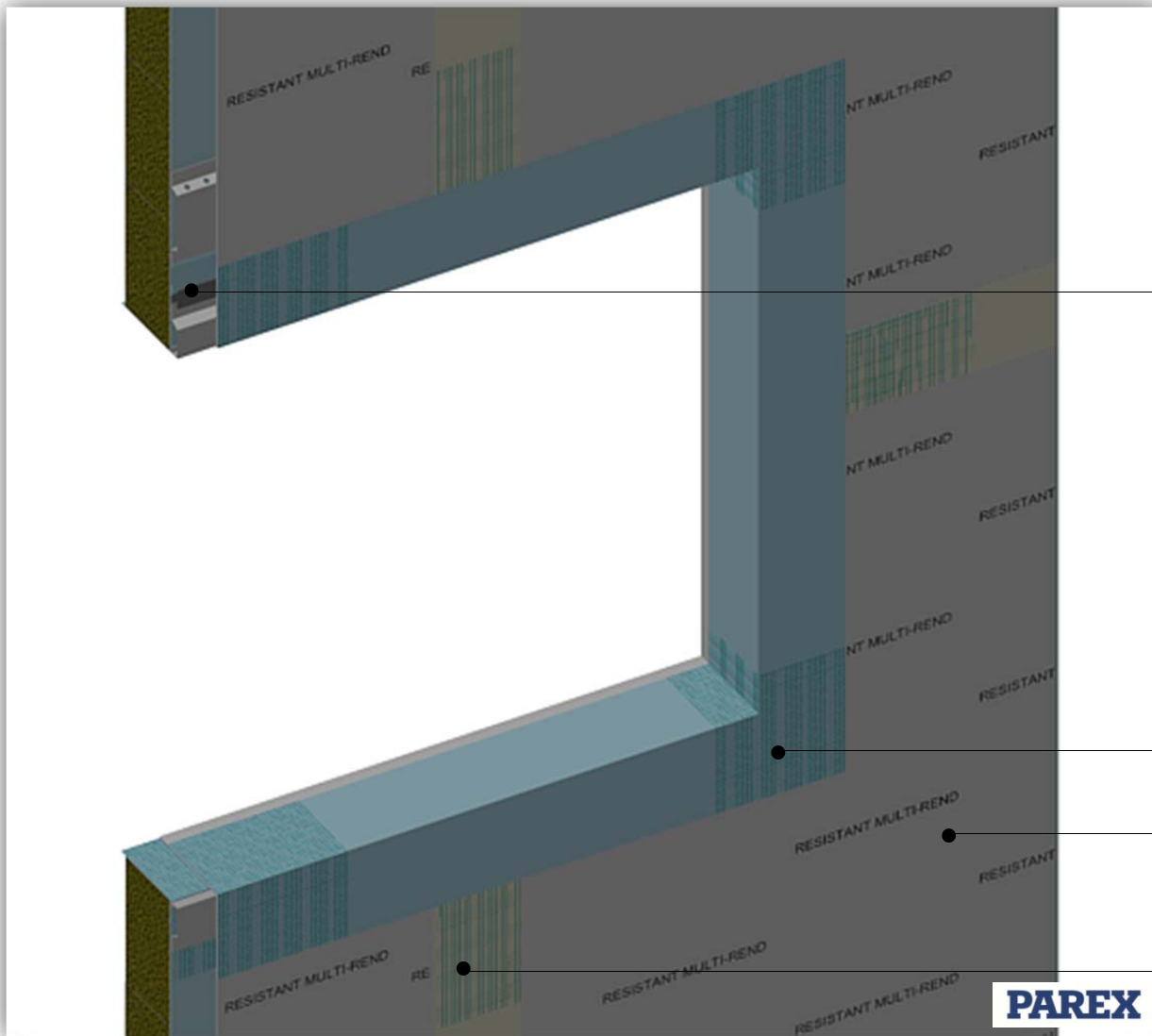
PAREXDIRECT CAVITY ONTO STEEL FRAME

PDCS0209A

WINDOW PROCEDURE 3 OF 5



This detail is for general guidance only and is not project specific. Always refer to the project architect details and the PAREX project specific specification.



Fasten the render boards to the manufacturers requirements.

Apply a mastic or silicone sealant bead to the face of the window / door head cavity deflection channel to ensure a good seal is created before securing the board.

Seal the board joint to the reveals with the Parex WeatherTech Weatherseal taken into the opening in one continuous application. Where there are large voids embed with 352 SA mesh to provide additional strength.

Resistant Multi-Rend render board

Seal the render board joints using Parex Maite embedded with 355 AVU mesh

The general principles of this detail will apply to all forms of openings. For unusual applications contact Parex for additional guidance.

System: PAREXDIRECT onto Steel Frame
Application: Window installation 3 of 5 - Sealing of the render board into the opening
Drawing No: PDCS0209A (In addition to this detail please also refer to details – PDCS0209 1 to 5)
Date: November 2015



The information provided in this document results from our knowledge of the products and our experience. On-site results may vary, in particular according to the product application methods adopted. Where application methods not covered by this document are used, customers must request specific additional information and/or carry out a representative test before using the products. The above-mentioned information in no way constitutes a warranty relative to the use of the products. Our general terms and conditions of sale shall prevail, in any event, on the information provided in this document. Prior to application, customers and users are requested to check that they have the latest version of this document.