

Resistant Building Products Ltd

M2 Business Park
122-126 Duncrue Street
Belfast
Northern Ireland
BT3 9AR

Tel: +44 (0) 28 9074 9400 Fax: +44 (0) 28 9074 9420

e-mail: sales@resistant.co.uk

website: www.resistant.co.uk



Agrement Certificate

15/5255

Product Sheet 1

RESISTANT BUILDING PRODUCTS MAGNESIUM OXIDE BOARDS

MULTI-PRO, MULTI-PRO XS AND MULTI-REND

This Agrément Certificate Product Sheet⁽¹⁾ relates to Multi-Pro, Multi-Pro XS and Multi-Rend, magnesium oxide boards. Multi-Pro and Multi-Pro XS are for use as internal and external wall sheathing and Multi-Rend as a render carrier board in domestic and non-domestic timber frame buildings, with no floor more than 18 m in height in some cases.

(1) Hereinafter referred to as 'Certificate'.

CERTIFICATION INCLUDES:

- factors relating to compliance with Building Regulations where applicable
- factors relating to additional non-regulatory information where applicable
- independently verified technical specification
- assessment criteria and technical investigations
- design considerations
- installation guidance
- regular surveillance of production
- formal three-yearly review.



KEY FACTORS ASSESSED

Strength and stability — partition walls incorporating the boards will have acceptable resistance to stresses (see section 6).

Behaviour in relation to fire — Multi-Pro and Multi-Pro XS have an A1 reaction to fire classification, and rendered Multi-Rend has a B-s2, d0 or B-s1, d0 reaction to fire classification, to BS EN 13501-1 : 2007. The use of Multi-Rend is restricted in some cases (see section 7).

Durability — the sheathing boards will have a life equal to that of the building in which they are installed (see section 13).

The BBA has awarded this Certificate to the company named above for the product described herein. This product has been assessed by the BBA as being fit for its intended use provided it is installed, used and maintained as set out in this Certificate.

On behalf of the British Board of Agrément

Brian Chamberlain
Head of Technical Excellence

Claire Curtis-Thomas
Chief Executive

Date of First issue: 21 October 2015

Certificate amended on 1 May 2019 to include Regulation 7(2) for England and associated text.

Certificate amended on 5 February 2020 to include new regulatory guidance for fire in Scotland and Wales.

The BBA is a UKAS accredited certification body – Number 113.

*The schedule of the current scope of accreditation for product certification is available in pdf format via the UKAS link on the BBA website at www.bbacerts.co.uk
Readers MUST check the validity and latest issue number of this Agrément Certificate by either referring to the BBA website or contacting the BBA directly.*

Any photographs are for illustrative purposes only, do not constitute advice and should not be relied upon.

British Board of Agrément

Bucknalls Lane
Watford
Herts WD25 9BA

©2015

tel: 01923 665300
clientservices@bbacerts.co.uk
www.bbacerts.co.uk

Regulations

In the opinion of the BBA, Multi-Pro, Multi-Pro XS and Multi-Rend, if installed, used and maintained in accordance with this Certificate, can satisfy or contribute to satisfying the relevant requirements of the following Building Regulations (the presence of a UK map indicates that the subject is related to the Building Regulations in the region or regions of the UK depicted):



The Building Regulations 2010 (England and Wales) (as amended)

| | | |
|---------------------------------|--------------------|---|
| Requirement: Comment: | B2(1) | Internal fire spread (linings) Multi-Pro is unrestricted by this Requirement. See section 7.2 of this Certificate. The products can satisfy this Requirement for use in all locations. See section 7.2 of this Certificate. |
| Requirement: Comment | B3(1)(2)(3) | Internal fire spread (structure) Multi-Pro XS can contribute to satisfying this Requirement. See section 7.3 of this Certificate. |
| Requirement: Comment: | B3(4) | Internal fire spread (structure) The products can contribute to satisfying this Requirement. See section 7.2 of this Certificate. |
| Requirement: Comment: | B4(1) | External fire spread Multi-Rend can contribute to satisfying this Requirement. See sections 7.5 to 7.7 of this Certificate. |
| Regulation: Comment: | 7(1) | Materials and workmanship The products are acceptable. See sections 13.1 and 13.2 and the <i>Installation</i> part of this Certificate. |
| Regulation: Comment: | 7(2) | Materials and workmanship Multi-Pro and Multi-Pro XS are unrestricted by this Regulation, and Multi-Rend is restricted by this Regulation. See sections 7.2 and 7.5 to 7.7 of this Certificate. |



The Building (Scotland) Regulations 2004 (as amended)

| | | |
|---|-------------------------------|---|
| Regulation: Comment: | 8(1) | Durability, workmanship and fitness of materials The use of the products satisfy the requirements of this Regulation. See sections 13.1 and 13.2 and the <i>Installation</i> part of this Certificate. |
| Regulation: Standard: Standard: Standard: Comment: | 9 2.1 2.2 2.3 | Building standards applicable to construction Compartmentation Separation Structural protection The use of Multi-Pro XS is restricted in some cases with reference to clauses 2.1.1 ⁽²⁾ , 2.1.4 ⁽²⁾ to 2.1.13 ⁽²⁾ , 2.1.15 ⁽²⁾ , 2.2.1 ⁽²⁾ to 2.2.5 ⁽²⁾ , 2.2.7 ⁽²⁾ , 2.2.1 ⁽¹⁾ to 2.2.8 ⁽¹⁾ , 2.2.10 ⁽¹⁾ , 2.3.1 ⁽¹⁾⁽²⁾ to 2.3.3 ⁽¹⁾⁽²⁾ and 2.3.5 ⁽¹⁾⁽²⁾ . See sections 7.2 and 7.3 of this Certificate. |
| Standard: Comment: | 2.4 | Cavities The products are unrestricted by this Standard with reference to clause 2.4.2 ⁽¹⁾⁽²⁾ . See section 7.2 of this Certificate. |
| Standard: Comment: | 2.5 | Internal linings Multi-Pro can contribute to satisfying this Standard with reference to clause 2.5.1 ⁽¹⁾⁽²⁾ . See section 7.2 of this Certificate. |

| | | |
|-------------------------|-----------|--|
| Standard: Comment: | 2.6 | Spread to neighbouring buildings Multi-Pro XS can contribute to meeting this Standard with reference to clauses 2.6.1 ⁽¹⁾⁽²⁾ , 2.6.5 ⁽¹⁾ and 2.6.6 ⁽²⁾ . Multi-Pro can contribute to meeting this Standard with reference to clauses 2.6.5 ⁽¹⁾ and 2.6.6 ⁽²⁾ . Multi-Rend is restricted by this Standard in some cases with reference to clauses 2.6.4 ⁽¹⁾⁽²⁾ , 2.6.5 ⁽¹⁾ and 2.6.6 ⁽²⁾ . See sections 7.2, 7.3, 7.5, 7.6 and 7.9 and 7.10 of this Certificate. |
| Standard: Comment: | 2.7 | Spread on external walls Multi-Rend is restricted by this Standard with reference to clause 2.7.1 ⁽¹⁾⁽²⁾ . See sections 7.5, 7.6, 7.9 and 7.10 and of this Certificate. |
| Standard: Comment: | 7.1(a)(b) | Statement of sustainability The products can contribute to satisfying the relevant requirements of Regulation 9, Standards 1 to 6, and therefore will contribute to a construction meeting a bronze level of sustainability as defined in this Standard. |
| Regulation: Comment: | 12 | Building standards applicable to conversions All comments given for the products under Regulation 9, Standards 1 to 6, also apply to this Regulation, with reference to clause 0.12.1 ⁽¹⁾⁽²⁾ and Schedule 6 ⁽¹⁾⁽²⁾ . (1) Technical Handbook (Domestic). (2) Technical Handbook (Non-Domestic). |



The Building Regulations (Northern Ireland) 2012 (as amended)

| | | |
|-------------------------|----------------------|--|
| Regulation: Comment: | 23(a)(i) (iii)(b) | Fitness of materials and workmanship The products are acceptable. See sections 13.1 and 13.2 and the <i>Installation</i> part of this Certificate. |
| Regulation: Comment: | 34(a)(b) | Internal fire spread — Linings Multi-Pro can contribute to satisfying this Regulation. See section 7.2 of this Certificate. |
| Regulation: Comment: | 35(1)(2)(3) | Internal fire spread — Structure Multi-Pro XS can contribute to satisfying this Requirement. See section 7.3 of this Certificate. |
| Regulation: Comment: | 35(4) | Internal fire spread — Structure Multi-Pro and Multi-Pro XS can contribute to satisfying this Regulation and Multi-Rend is restricted by this Regulation. See section 7.2 of this Certificate. |
| Regulation: Comment: | 36(a) | External fire spread Multi-Rend can contribute to satisfying this Regulation. See sections 7.5 to 7.7 of this Certificate. |

Construction (Design and Management) Regulations 2015

Construction (Design and Management) Regulations (Northern Ireland) 2007

Information in this Certificate may assist the client, Principal Designer/CDM co-ordinator, designer and contractors to address their obligations under these Regulations.

See sections: 3 *Delivery and site handling* (3.3) and 14 *General* (14.1 and 14.4) of this Certificate.

Additional Information

NHBC Standards 2014

NHBC accepts the use Multi-Pro, Multi-Pro XS and Multi-Rend, provided they are installed, used and maintained in accordance with this Certificate, in relation to *NHBC Standards*, Part 6 *Superstructure (excluding roofs)*, Chapter 6.2 *External timber-framed walls*, Chapter 6.3 *Internal walls* and Chapter 6.9 *Curtain walling and cladding* and Part 8 *Services and internal finishing*, Chapter 8.2 *Wall and ceiling finishes*, Clauses D3 *Plastering* and D4 *Plasterboard and dry lining*.

Technical Specification

1 Description

1.1 Multi-Pro, Multi-Pro XS and Multi-Rend are boards manufactured from a mixture of magnesium oxide, calcium carbonate and magnesium chloride and fibreglass mesh reinforcement.

1.2 The boards are available in the dimensions given in Table 1.

Table 1 Board characteristics and dimensions

| | Multi-Pro | Multi-Pro XS | Multi-Rend |
|---|--|---|-------------|
| Thickness (± 0.2 mm) | 6, 9, 12 | 6.5, 9, 12 | 9, 12 |
| Width (mm) x length (mm) | 1200 x 800 1200 x 1220 1200 x 2400 1220 x 2440 1200 x 3050 | 1200 x 2400 1200 x 2440 200 x 2700 1200 x 3050 | 1200 x 2400 |
| Edge finish | square | square | Square |
| Fibreglass mesh layers | 2 | 4 | 4 |
| Density ($\text{kg}\cdot\text{m}^{-3}$) | 1050 | 1050 | 1050 |
| Thermal conductivity ($\text{W}\cdot\text{m}^{-1}\cdot\text{K}^{-1}$) | 0.307 | 0.307 | 0.307 |

1.3 The Multi-Rend board is for use as a render carrier board in conjunction with the render systems given in Table 2. The board is fixed to timber frame walls via vertical timber battens, minimum 25 mm deep, at 600 mm maximum centres using 4.8 mm by 42 mm self-drilling stainless steel screws (BMDW4842) at 300 mm centres.

1.4 Ancillary items used in conjunction with the boards but outside the scope of this Certificate are:

- timber frame substrate wall
- timber battens
- external render systems other than those specified in Table 2
- render beads
- expansion joint beads
- silicone sealant
- insect mesh
- stainless steel screws — self-tapping countersunk head for timber stud and self-tapping countersunk head case hardened carbon steel screw wing.

2 Manufacture

2.1 The boards are manufactured by controlled methods using a natural cure process.

2.2 As part of the assessment and ongoing surveillance of product quality, the BBA has:

- agreed with the manufacturer the quality control procedures and product testing to be undertaken
- assessed and agreed the quality control operated over batches of incoming materials
- monitored the production process and verified that it is in accordance with the documented process

- evaluated the process for management of nonconformities
- checked that equipment has been properly tested and calibrated
- undertaken to carry out the above measures on a regular basis through a surveillance process, to verify that the specifications and quality control operated by the manufacturer are being maintained.

2.3 The products are manufactured in China and are marketed/distributed in the UK by the Certificate holder. The management system at the factory has been assessed and registered as meeting the requirements of BS EN ISO 9001 : 2008 by BRE Global (Certificate 983).

3 Delivery and site handling

3.1 Boards are stacked on timber pallets. Each pack contains a label incorporating the product name, thickness, width, length, batch number and number of boards per pallet.

3.2 Boards must be stored horizontally in a ventilated and dry environment on a flat level, raised surface under cover indoors and protected from the weather. The boards must not be kept upright for long periods of time.

3.3 The boards should always be lifted by at least two people and not dragged across each other to prevent unnecessary scratching or damage. Boards should be carried on edge and extra precaution should be taken to protect the visible front edge and corners.

Assessment and Technical Investigations

The following is a summary of the assessment and technical investigations carried out on Multi-Pro, Multi-Pro XS and Multi-Rend.

Design Considerations

4 General

4.1 Multi-Pro, Multi-Pro XS and Multi-Rend are satisfactory for use in walls of domestic and non-domestic timber frame buildings with no floor more than 18 m above the ground, in some cases, in the following applications:

- Multi-Pro — as passive fire protecting internal wall liner, soffit liner and tile backer board and in applications where impact and fire resistance are required
- Multi-Pro XS — as a structural sheathing board for racking resistance purposes fixed to timber frame walls with timber supports at 600 mm maximum centres
- Multi-Rend — as a render carrier board (see Figure 1) in conjunction with render systems given in Table 2. The board is fixed to timber frame walls via vertical timber battens at 600 mm maximum centres using 4.8 mm by 42 mm self-drilling stainless steel screws (BMDW4842) at 300 mm centres.

Figure 1 Multi-Rend system

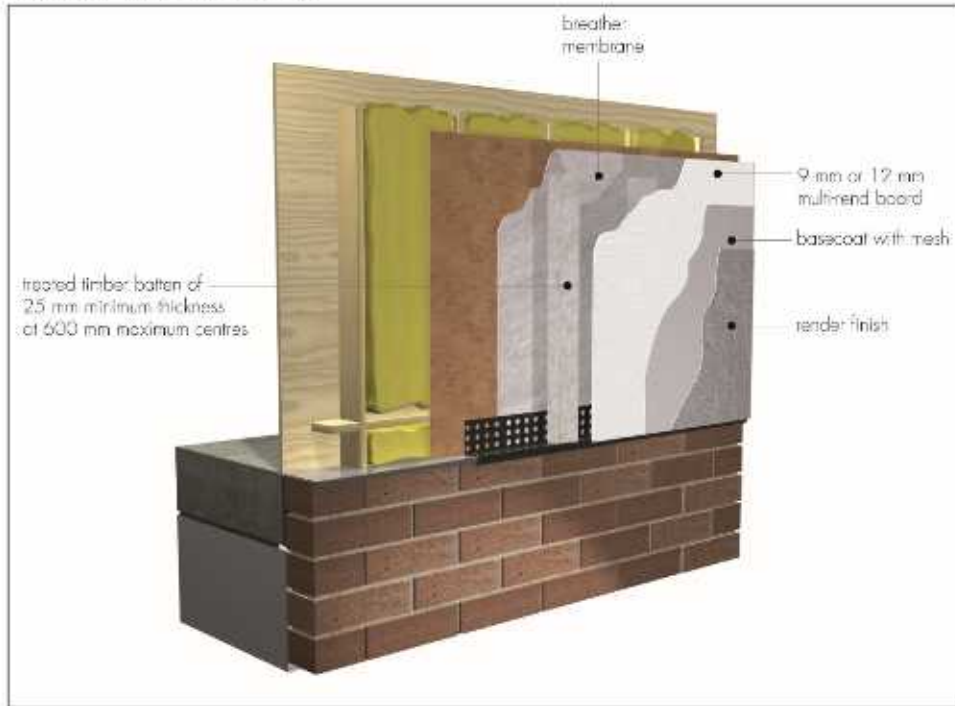


Table 2 Render systems for use with Multi-Rend board

| Component | Render system | |
|-----------|-------------------------|-----------------------------|
| | Alsecco | K Rend |
| Basecoat | Alsecco Armatop L-Aero | K Rend HP12 basecoat |
| Mesh | Alsecco mesh | K Rend mesh |
| Primer | Alsecco Primer | K Rend Primer TC003 |
| Render | Alsecco silicone render | K Rend TC15 Silicone render |

4.2 The design of the Multi-Rend system should include:

- a 25 mm minimum ventilated and drained cavity system incorporating an insect mesh to all ventilation openings
- effective detailing around window openings to ensure that wind-driven rain is excluded from hidden members in the surround and from the cavity
- an effective breather membrane on the inside, to ensure the frame structure is protected.

4.3 The boards achieve the following classification in accordance with BS EN 12467 : 2012, clause 5.2:

- weather resistance — Category B (sheets which are intended for applications where they may be subjected to heat, moisture and occasional frost, eg where they are either protected from or not subjected to severe weathering conditions)
- bending strength — Class 2
- dimensional tolerance — Level 1.

4.4 The timber frame substrate walls and timber battens must be structurally sound, designed and constructed in accordance with BS EN 1995-1-1 : 2004, and preservative treated in accordance with BS EN 351-1 : 2007.

5 Practicability of installation

The boards are designed to be installed in accordance with this Certificate and the Certificate holder’s installation instructions by a competent builder, or a contractor, experienced with these types of products.

6 Strength and stability

General

6.1 A suitably qualified and experienced individual must check the design and method of installation of the boards.

6.2 Wind actions should be calculated in accordance with BS EN 1991-1-4 : 2005. Due consideration should be given to the higher pressure coefficients applicable to corners of the building as recommended in this Standard.

6.3 The timber frame to which the boards are fixed must be structurally sound and constructed in accordance with the requirements of the relevant national Building Regulations and Standards.

6.4 The timber frame structure supporting Multi-Pro and Multi-Rend boards must be able to take the full wind actions and capable of sustaining the weight of the boards. The adequacy of the structural frame is outside the scope of this Certificate and must be verified by a suitably qualified and experienced individual.

6.5 The wall diaphragms must be designed to resist both horizontal and vertical imposed loads in accordance with clause 9.2.4 of BS EN 1995-1-1 : 2004.

6.6 From test data in accordance with BS EN 594 : 2011, wall constructions consisting of 6.5 mm and 9.0 mm thick Multi-Pro XS boards (with 2 mm gap between boards) fixed to 38 mm by 89 mm grade C16 timber studs at 600 mm maximum centres, with 2.9 mm diameter by 50 mm long nails (19 mm and 10 mm edge distance to perimeter and internal studs respectively) at 150 mm centres to perimeter studs and 300 mm centres to internal studs were found to achieve the characteristic racking strengths shown in Table 3.

Table 3 Characteristic racking strength from test⁽¹⁾ (kN·m⁻¹)

| | 6.5 mm Multi-Pro XS board | | 9.0 mm Multi-Pro XS board | |
|---|---------------------------|------|---------------------------|------|
| | 0 | 5 | 0 | 5 |
| Load per stud (kN) | | | | |
| Characteristic racking strength (kN·m ⁻¹) | 2.20 | 3.12 | 3.15 | 4.16 |

(1) Design racking strengths must be calculated by applying the appropriate modification factor k_{mod} and partial factor for material properties g_m to the characteristic racking strength in accordance with BS EN 1995-1-1 : 2004.

6.7 Tests carried out confirm that the bond strength between the three basecoats and Multi-Rend board is higher than 0.08 N·mm⁻² in accordance with the requirements of ETAG 004 : 2013.

6.8 The characteristic pull-through resistance of the 4.8 mm by 42 mm self-drilling screws (BMDW4842) through the boards were calculated from pull-through failure values determined by tests and are given in Table 4.

Table 4 Characteristic pull-through resistance (kN)

| | Multi-Pro board thickness (mm) | | Multi-Rend board thickness (mm) | | |
|-------|--------------------------------|--------------------|---------------------------------|--------------------|-------|
| | Dry | Exposed to wetting | Dry | Exposed to wetting | |
| 9 | 12 | 9 | 12 | 9 | 12 |
| 0.345 | 0.500 | 0.211 | 0.371 | 0.373 | 0.530 |

6.9 The characteristic pull-out resistance of the 4.8 mm by 42 mm self-drilling screws (BMDW4842) from grade C16 timber with an embedment length of 30 mm, was calculated from pull-out failure values determined by tests and found to be 0.383 kN.

Impact resistance — Multi-Rend system

6.10 When tested⁽¹⁾ for hard body impacts of 3 and 10 Joules of energy in accordance with ETAG 004 : 2013, the system comprising a 9 mm thick Multi-Rend carrier board, with the two render systems specified in Table 2 (of this Certificate), supported on timber battens at 600 mm centres maximum, achieved adequate resistance to impact. Therefore, the 9 mm and 12 mm Multi-Rend boards coated with the render systems specified in Table 2 and installed with timber battens at 600 mm centres maximum, are suitable for use in external walls in Category I, II, III and IV⁽²⁾.

6.11 When tested⁽¹⁾ for soft body impact in accordance with MOAT 43 : 1987, Multi-Rend system, with 9 mm Multi-Rend boards supported on battens at 600 mm centres maximum, and with the render systems specified in Table 2, achieved adequate resistance to soft body impact. Therefore, both the 9 mm and 12 mm Multi-Rend boards are suitable for use in Multi-Rend system as described in external walls in Category E₂, E₃ and E₄⁽³⁾.

Impact resistance — Multi-Pro board

6.12 When tested⁽¹⁾ for hard body impacts of 3 and 10 Joules of energy in accordance with ETAG 004, the 9 mm and 12 mm Multi-Pro boards supported on battens at 450 mm maximum centres, achieved adequate resistance. Multi-Pro boards (9 mm and 12 mm) are therefore suitable for use as a wall liner in areas requiring impact resistance in Category I, II, III and IV⁽²⁾.

6.13 When tested⁽¹⁾ for soft body impact in accordance with ISO 7892 : 1988, the 9 mm and 12 mm Multi-Pro boards supported on battens at 450 mm centres maximum, achieved adequate resistance to soft body impact and are therefore suitable for use in external walls in Category E₂, E₃ and E₄⁽³⁾ and internal walls in Category I₂ and I₃⁽³⁾.

(1) Results only valid for described construction.

(2) The use categories are defined in ETAG 034 : 2012 Part 1 as:

- Use category I — a zone readily accessible at ground level to the public and vulnerable to hard body impacts but not subjected to abnormally rough use
- Use category II — a zone liable to impacts from thrown or kicked objects, but in public locations where the height of the system will limit the size of the impact; or at lower levels where access to the building is primarily to those with some incentive to exercise care
- Use category III — a zone not likely to be damaged by normal impacts caused by people or by thrown or kicked objects
- Use category IV — a zone out of reach from ground level.

(3) The use categories are defined in MOAT 43 : 1987 as:

- Use category E₂ — a zone readily accessible to the public and others with little incentive to exercise care but not in vandal prone locations
- Use category E₃ — a zone accessible primarily to those with some incentive to exercise care. Some chance of accident occurring or of misuse
- Use category E₄ — a zone only accessible, but not near a common route, to those with high incentive to exercise care. Small chance of accident occurring or of misuse
- Use category I₂ — a zone readily accessible to public and others with little incentive to exercise care. Some chance of accident occurring or of misuse
- Use category I₃ — a zone accessible primarily to those with some incentive to exercise care. Some chance of accident.

7 Behaviour in relation to fire

Multi-Pro and Multi-Pro XS

7.1 Where Multi-Pro and Multi-Pro XS boards are incorporated in a wall construction which is subject to fire resistance requirements, an appropriate assessment or test must be carried out by a United Kingdom Accreditation Service (UKAS) accredited laboratory for the test concerned.



7.2 When tested in accordance with BS EN 13501-1 : 2007, Multi-Pro, Multi-Pro XS and Multi-Rend boards (without render applied) achieved a reaction to fire classification of A1 and are not subject to any restriction on building height or proximity to boundaries.

7.3 The results of fire resistance partition wall constructions are given in Table 5.

Table 5 Fire resistance duration

| Construction | Duration (minutes) | Test Standard |
|---|--------------------|--|
| Partition wall comprising (from the unexposed face) one layer 9 mm thick Multi-Pro XS board, 38 mm by 138 mm C16 grade softwood timber studs, 140 mm thick Knauf Ecosse insulation, one layer 9 mm thick Multi-Pro XS board, 45 mm by 45 mm treated vertical timber battens at 600 mm centres and one layer 12.5 mm thick British Gypsum Gyproc fireline plasterboard | 90 | BS 476-21 : 1987 |
| One layer of 12 mm Multi-Pro XS board fixed either side of a vertical 70 mm x 36 mm by 1 mm thick galvanized mild steel studs with 6 mm magnesium oxide board strip with a cavity filled with two 30 mm thick Rocksilks Universal Slab RS45 rock mineral wool insulation | 68 | BS EN 1364-1 : 1999 (non load-bearing) |
| One layer of 12 mm thick Multi-Pro XS board screw fixed to either side of a timber frame consisting of 60 mm by 48 mm grade C16 softwood timber studs at 600 mm centres, with softwood timber noggins between studs behind horizontal joints between the Multi-Pro XS boards. Cavity filled with two layers of Rocksilks Universal Slab RS45 rock mineral wall insulation | 132 | BS EN 1364-1 : 1999 (non load-bearing) |

7.4 Designers should refer to the relevant national Building Regulations and guidance for alternative approaches and detailed conditions of use, particularly in respect of requirements for substrate fire performance, cavity barriers and combustibility limitations for other materials and components used in the overall wall construction, for example, thermal insulation.

Multi-Rend system



7.5 The reaction to fire classification for the Multi-Rend system finished with K Rend render system is B-s2, d0 in accordance with BS EN 13501-1 : 2007.

7.6 The reaction to fire classification for the Multi-Rend system finished with Alsecco render system is B-s1, d0 in accordance with BS EN 13501-1 : 2007.



7.7 In England, Wales and Northern Ireland, Multi-Rend is not classified as non-combustible or of limited combustibility and may be used on buildings at any proximity to a boundary. For buildings with a storey more than 18 m above the ground, designers should consider the impact on the risk of fire spread over the wall. See also section 7.8 of this Certificate.



7.8 In England and Wales, Multi-Rend should not be used on external walls of buildings that have a storey at least 18 m above ground level and contain: one or more dwellings, an institution, a room for residential purposes (excluding any room in a hostel, hotel or boarding house), student accommodation, care homes, sheltered housing, hospitals or dormitories in boarding schools.



7.9 In Scotland, the Multi-Rend may be used on external walls of buildings more than 1 m from a boundary and, on houses, 1m or less from a boundary. With minor exceptions, the panels should be included in calculations of unprotected area, except on houses where the external wall behind has the appropriate fire resistance.

7.10 In Scotland, Multi-Rend should not be used on any building with a storey more than 11 m above the ground, or on any entertainment or assembly building with a total storey area more than 500 m², or on any hospital or residential care building with a total storey area more than 200 m².

8 Weathertightness

8.1 The Multi-Rend system as described in section 1.3 (of this Certificate) will resist the passage of moisture from weather. Any water collecting in the cavity due to rain or condensation will be removed by drainage and ventilation.

8.2 For external wall constructions incorporating Multi-Pro and Multi-Pro XS boards, the outer weatherproofing should have adequate resistance to wind-driven rain, particularly in regions classified as severe exposure.

8.3 External walls incorporating the boards must have suitable weather protection on the outside and a vented cavity. Any water collecting in the cavity due to rain or condensation must be able to be drained through openings at the base of each closed section of cavity. The product should be treated as conventional sheathing board with regard to detailing and damp-proofing at openings, eaves and sole plate, and the fixing of wall ties. Where required by design, the addition of a breather membrane must be in accordance with BS 5250 : 2011.

9 Water absorption



The water absorption of Multi-Rend board with the Alsecco and K Rend render systems is acceptable in accordance with the requirements of ETAG 004 : 2013.

10 Condensation risk

10.1 When using the Multi-Rend system, consideration must be given to the overall wall design using the recommendations of BS 5250 : 2011 to minimise the risk of condensation.

10.2 As the Multi-Rend system incorporates a 25 mm clear ventilated cavity between the back of Multi-Rend board and the substrate wall, the risk of interstitial condensation within the system is reduced.

10.3 The water vapour resistivity for Multi-Pro, Multi-Pro XS and Multi-Rend boards is $222 \text{ MN}\cdot\text{s}\cdot\text{g}^{-1}$, $422 \text{ MN}\cdot\text{s}\cdot\text{g}^{-1}$ and $422 \text{ MN}\cdot\text{s}\cdot\text{g}^{-1}$ respectively.

11 Mould resistance.

Results of tests indicate that the boards are resistant to mould growth.

12 Maintenance

Boards

12.1 As the boards have suitable durability and in most cases will be covered with finishes, maintenance is not required.

12.2 Under normal conditions of use the boards are unlikely to suffer damage, but if damage does occur, the boards must be replaced.

Multi-Rend system

12.3 Periodic inspections are recommended to assess the need for cleaning, localised repairs and element replacements, such as joints seals and fixings, to ensure that ingress of water does not occur. Necessary repairs should be carried out immediately (see section 12.2).

12.4 Damaged areas must be repaired using appropriate materials and advice should be sought from the Certificate holder.

13 Durability

Multi-Pro and Multi-Pro XS boards



13.1 The boards are durable materials and should have a life equal to that of the structure in which they are installed.

Multi-Rend system



13.2 The durability and service life of the Multi-Rend system will depend on the building location, immediate environment and intended use of the building, and proper maintenance and repairs.

13.3 Provided regular maintenance is carried out, as described in section 12 and in accordance with the Certificate holder's instructions, the Multi-Rend system can be expected to have a service life in excess of 30 years when used in the normal climatic conditions found in the UK.

13.4 Care should be taken when designing, detailing and constructing buildings to ensure that moisture does not accumulate within the board.

Installation

14 General

14.1 The level of supervision during installation of Multi-Pro, Multi-Pro XS and Multi-Rend boards and the associated structure, must be sufficient to ensure the quality of workmanship.

14.2 Framing grade timber studs or galvanized steel framework should be provided at a maximum 600 mm centres.

14.3 The frame to which the panels are fixed must be structurally sound and constructed in accordance with the requirements of the relevant national Building Regulations and Standards.

14.4 The boards can be scored using a utility knife and snapped. Suitable dust control measures must be taken (eg protective safety glasses and respiratory masks) observing all necessary health and safety regulations. Damaged boards must not be used. The boards must be stored, handled and used in accordance with this Certificate and the Certificate holder's installation and health and safety instructions.

Multi-Rend

14.5 Horizontal movement joints in accordance with BS EN 13914-1 : 2005 must be provided at every floor to accommodate vertical shrinkage of up to 6 mm in the timber frame and to follow movement joints in the substructure.

14.6 Vertical movement joints in accordance with BS EN 13914-1 : 2005 should be provided at a maximum of 15 m intervals. The actual spacing and position of the joints will be determined by the shape of the area to be rendered and should coincide with movement joints in the structure and allow for the same degree of movement.

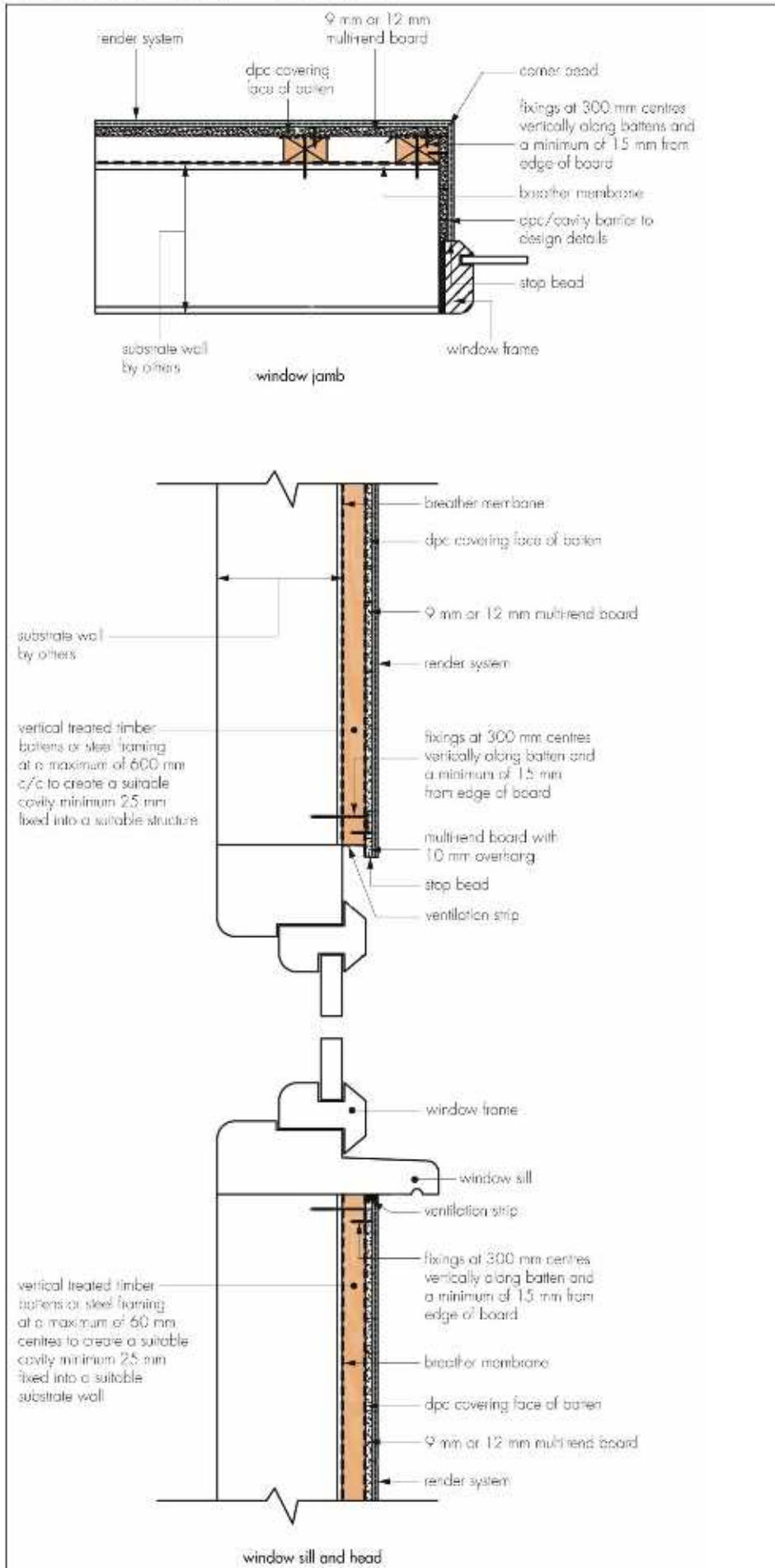
14.7 The system should be used above damp-proof course level and a minimum of 150 mm above ground level.

15 Procedure

15.1 Boards are attached to the vertical frame with screws at nominal spacings of 40 mm from the board top edge and 15 mm from side edge spaced at nominal spacings of 300 mm centres vertically and at a maximum 600 mm horizontally. The screws must not be over-tightened. Fixing should start from the centre working outwards to avoid distortion within the board.

15.2 For Multi-Pro and Multi-Pro XS boards, a 6 mm gap is left between the floor and first board. If necessary, a 4 mm gap can be left between boards if there is a possibility of movement in the structure or building. Boards are installed staggered to avoid four corners meeting at one point.

Figure 2 Opening details — Timber Frame



15.3 For Multi-Rend board, the following installation procedures should be followed:

- a minimum 4 mm gap should be left between and all around the boards. Anticipated movement in the timber-frame structure should be allowed for and mirrored when fitting Multi-Rend
- prior to the basecoat, a bead of silicone must be applied around all window and door frames or where the render abuts any other building or surface in accordance with the Certificate holder's installation instructions to ensure that they are weathertight
- the basecoat is prepared by thoroughly mixing the contents with the appropriate amount of clean water following the manufacturer's instructions until the correct workability is achieved.
- the basecoat is trowelled onto the surface of Multi-Rend board to a thickness of between 4 mm and 5 mm ensuring it is butted against details (eg under window sills), and trowelled smooth. The surface is roughened with a notched trowel
- the drying period of any render will depend on weather conditions; however, the basecoat must be left to harden as recommended by the manufacture before applying the relevant finish
- mesh reinforcement is placed onto the roughened surface of the basecoat, which is then trowelled over to completely cover the mesh. All the rendered surfaces must be reinforced and joints in the mesh must overlap by at least 100 mm
- additional mesh is required around openings and at corners in accordance with the render supplier's installation instructions
- all window and door openings are sealed in accordance with the Certificate holder's installation instructions to ensure that they are weathertight (see Figure 2).

15.4 Where boards are installed over areas with fixtures and fittings, cut-outs should be carried out before installation.

Technical Investigations

16 Tests

Tests were conducted on the boards and the results assessed to determine:

- water absorption
- bending strength
- flexural strength/modulus of rupture
- density
- reaction to fire
- resistance to fire
- water impermeability
- hard and soft body impact
- resistance to organic growth
- dimensional changes
- durability
- racking resistance
- thermal conductivity
- tensile strength
- pull-out/pull-through strength of fixings
- bond strength, after ageing, between the Multi-Rend board and specified render systems.

17 Investigations

The manufacturing process was evaluated, including the methods adopted for quality control, and details were obtained of the quality and compositions of materials used.

Bibliography

- BS 476-21 : 1987 *Fire Tests on Building Materials and Structures — Methods for Determination of the Fire Resistance of Loadbearing Elements of Construction*
- BS 5250 : 2011 *Code of practice for control of condensation in buildings*
- BS EN 351-1 : 2007 *Durability of wood and wood-based products — Preservative-treated solid wood — Classification of preservative penetration and retention*
- BS EN 594 : 2011 *Timber structures — Test methods — Racking strength and stiffness of timber frame wall panels*
- BS EN 1364-1 : 1999 *Fire Resistance Tests for Non-Loadbearing Elements — Walls*
- BS EN 1991-1-4 : 2005 *Eurocode 1 : Actions on structures — General actions — Wind actions*
- BS EN 1995-1-1 : 2004 *Eurocode 5 : Design of timber structures — General — Common rules and rules for buildings*
- BS EN 12467 : 2012 *Fibre-cement flat sheets — Product specification and test methods*
- BS EN 13501-1 : 2007 *Fire classification of construction products and building elements — Classification using test data from reaction to fire tests*
- BS EN 13914-1 : 2005 *Design, preparation and application of external rendering and internal plastering — External rendering*
- BS EN ISO 9001 : 2008 *Quality management systems — Requirements*
- BS EN ISO 12572 : 2001 *Hygrothermal performance of building materials and products — Determination of water vapour transmission properties*
- ETAG 004 : 2013 *Guideline for European Technical Approval of External Thermal Insulation Composite Systems with Rendering*
- ETAG 034 : 2012 *Guideline for European Technical Approval of Kits for External Wall Claddings — Part 1 — Ventilated Cladding Kits Comprising Cladding Components and Associated Fixings*
- ISO 7892 : 1988 *Vertical building elements — Impact resistance tests — Impact bodies and general test procedures*
- MOAT 43 : 1987 *UEAtc directives for impact testing opaque vertical building components*
- BRE Report (BR 135 : 2003) *Fire Performance of External Insulation For Walls of Multi-Storey Buildings*

18 Conditions

18.1 This Certificate:

- relates only to the product/system that is named and described on the front page
- is issued only to the company, firm, organisation or person named on the front page – no other company, firm, organisation or person may hold or claim that this Certificate has been issued to them
- is valid only within the UK
- has to be read, considered and used as a whole document – it may be misleading and will be incomplete to be selective
- is copyright of the BBA
- is subject to English Law.

18.2 Publications, documents, specifications, legislation, regulations, standards and the like referenced in this Certificate are those that were current and/or deemed relevant by the BBA at the date of issue or reissue of this Certificate.

18.3 This Certificate will remain valid for an unlimited period provided that the product/system and its manufacture and/or fabrication, including all related and relevant parts and processes thereof:

- are maintained at or above the levels which have been assessed and found to be satisfactory by the BBA
- continue to be checked as and when deemed appropriate by the BBA under arrangements that it will determine
- are reviewed by the BBA as and when it considers appropriate.

18.4 The BBA has used due skill, care and diligence in preparing this Certificate, but no warranty is provided.

18.5 In issuing this Certificate the BBA is not responsible and is excluded from any liability to any company, firm, organisation or person, for any matters arising directly or indirectly from:

- the presence or absence of any patent, intellectual property or similar rights subsisting in the product/system or any other product/system
- the right of the Certificate holder to manufacture, supply, install, maintain or market the product/system
- actual installations of the product/system, including their nature, design, methods, performance, workmanship and maintenance
- any works and constructions in which the product/system is installed, including their nature, design, methods, performance, workmanship and maintenance
- any loss or damage, including personal injury, howsoever caused by the product/system, including its manufacture, supply, installation, use, maintenance and removal
- any claims by the manufacturer relating to CE marking.

18.6 Any information relating to the manufacture, supply, installation, use, maintenance and removal of this product/system which is contained or referred to in this Certificate is the minimum required to be met when the product/system is manufactured, supplied, installed, used, maintained and removed. It does not purport in any way to restate the requirements of the Health and Safety at Work etc. Act 1974, or of any other statutory, common law or other duty which may exist at the date of issue or reissue of this Certificate; nor is conformity with such information to be taken as satisfying the requirements of the 1974 Act or of any statutory, common law or other duty of care.